

# DIGITAL CAMPUS ARCHITECTURE (E-GOVERNANCE)



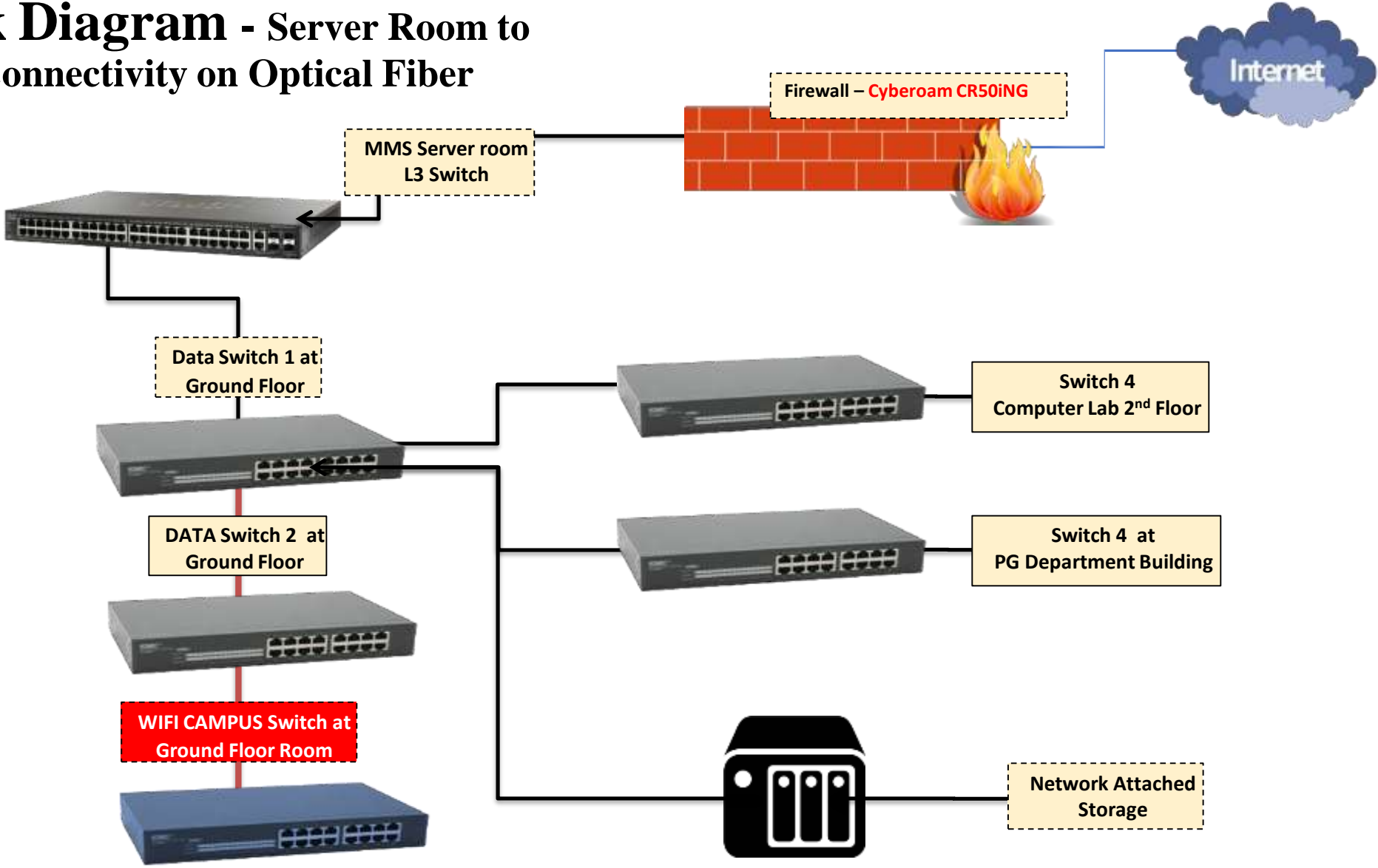
## DINSHA PATEL COLLEGE OF NURSING

College Road Nadiad – 387001

Ph. 9924444848

[www.dpcn.org.in](http://www.dpcn.org.in)

# Network Diagram - Server Room to Buildings Connectivity on Optical Fiber



# SOLUTION ARCHITECTURE

Layers				External Services
Client	Network	Application	Data	
Super Admin	Internet	Gateway Level Internet Security	Common Database	Web Services e-mail services
Top Management	Local LAN	WIFI Management system	Web Services	SMS Gateway
Department Admin	Fiber	Corporate Antivirus Server/ Client	Surveillance Data	Biometrics
Faculty / Students	Wi-Fi	College LMS ( Learning Management System )		Payment Gateway
WIFI Portal		Cloud Backup Solution		RFIS / Card Reader



# E-GOVERNANCE IN DPCN

---

- The network is protected and controlled by Cyberoam CR50iNG Firewall.
- DPCN have been equipped with **1.** 20 Mbps Internet Lease Line from Reliance Jio Infocomm Limited, **2.** 100 Mbps broadband form Charotar telelink PVT. LTD. **3.** 40 Mbps broadband from GTPL PVT.LTD which gets terminated in Server Room.
- All the servers are placed in the Server Room and restricted access from outside the campus



# E-GOVERNANCE IN MGMUST

---

- From the Server Room, the network is distributed to all buildings via 1 GBPS Fiber Uplinks.
- All network switches are Managed Switch with VLAN.
- Institutes Database are uploaded on Government web portals i.e. NAAC, NMC, DCI, INC portals.
- DPCN Protect with Data Backup Security & Data Protection System Services which provide institute local data backup with External Storage ( Pen drive, Hard drive, Nas, Cloud backup Storage)



# INTEGRATED SOLUTION FRAMEWORK

Colleges	Admission	Fee Schedule	Library
Departments	Students	Examinations	Alumni
Programs	Time Table	Results	Feedback
Semesters	Attendance	Marksheets	Reports
Subjects	Assignments	Certificates	Orientation programmes
Faculties	Clinical Postings	Scholarships	
Syllabus	Internal Assessments		
	Field Visits		

Digital Campus Framework



# E-GOVERNANCE IN ADMINISTRATION

---

- Attendance is being captured by Biometric device at each location of Institute.
- All the Servers, Desktops, NUC and Laptops are licensed with proper Microsoft Licenses.
- All the Servers and Clients are protected by Antivirus with Seqrite End Point Security.
- All the websites are maintained / updated regularly by Ample InfoTech ( Nadiad ).
- For fulfill the needs of accounting and finance, Tally ERP is in place and is updated to latest version time to time.



# E-GOVERNANCE IN STUDENT ADMISSION & EXAMINATION SUPPORT

---

- College LMS Learning Management System procured for automation.
- The library and information services activities have been made fully automated using SOUL 3.0 : ILMS with integrated In/Out system.
- LCD projectors interfaced with computers have been installed in all the Lecture Halls/Class Rooms to undertake Computer-Aided Teaching/Learning as well as for presentations

